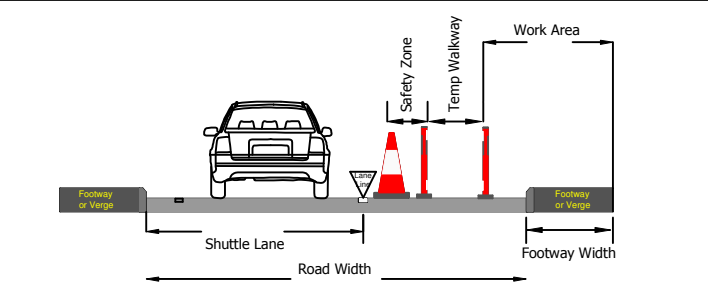


Centurion Traffic Management
 3B, Haigh Park Road
 Stourton
 Leeds
 LS10 1RT
 Tel: 0113 277 5360
 E-mail: info@centuriontraffic.com
 www.centuriontraffic.com
 Date: 20/06/17
 Scheme: Hinxton, Ickleton Road LC & Duxford LC
 Traffic Management: Full Closure

Measurement Key
 Road Width = N/A
 Shuttle Lane = N/A
 Sideways Safety Zone = N/A
 Longways Safety Zone = N/A
 Footway Width = N/A
 Temporary Footway Width = N/A
 Work Area = N/A



Crown Copyright. All rights reserved.
 Drawing to be read in conjunction with relevant method statement and risk assessment.
 Please check for amendments before use.

Drawing Ref: MVR-CTM

Unauthorised reproduction infringes Crown Copyright and may lead to prosecution or civil proceedings.

Scale	Drawn	Authorised / Approved
NTS	MVR	SW